

Wheelabrator Parc Adfer

Community Liaison Group Meeting 8

Apo Sarandidis, Senior Project Manager

Julian Harrison, Project Director



Project Overview

Environment & Education



- **Environmental Benefits**

- Process ~200K tonnes per year
- Renewable energy to power 30,000 homes
- Divert 98% of post-recycled waste from landfill
- Recycle over 15% of authority waste through metals and aggregate recovery, directly increasing North Wales recycling rates by 7%
- Capacity to export heat or steam energy to nearby industrial, commercial or residential users
- Achieve the demanding R1 efficiency standard

- **Educational Facilities & Support (Visitors' Centre)**

- For use by the Authority at their discretion and educational groups such as schools, colleges & environmental interest groups

Project Overview

Economic Benefits



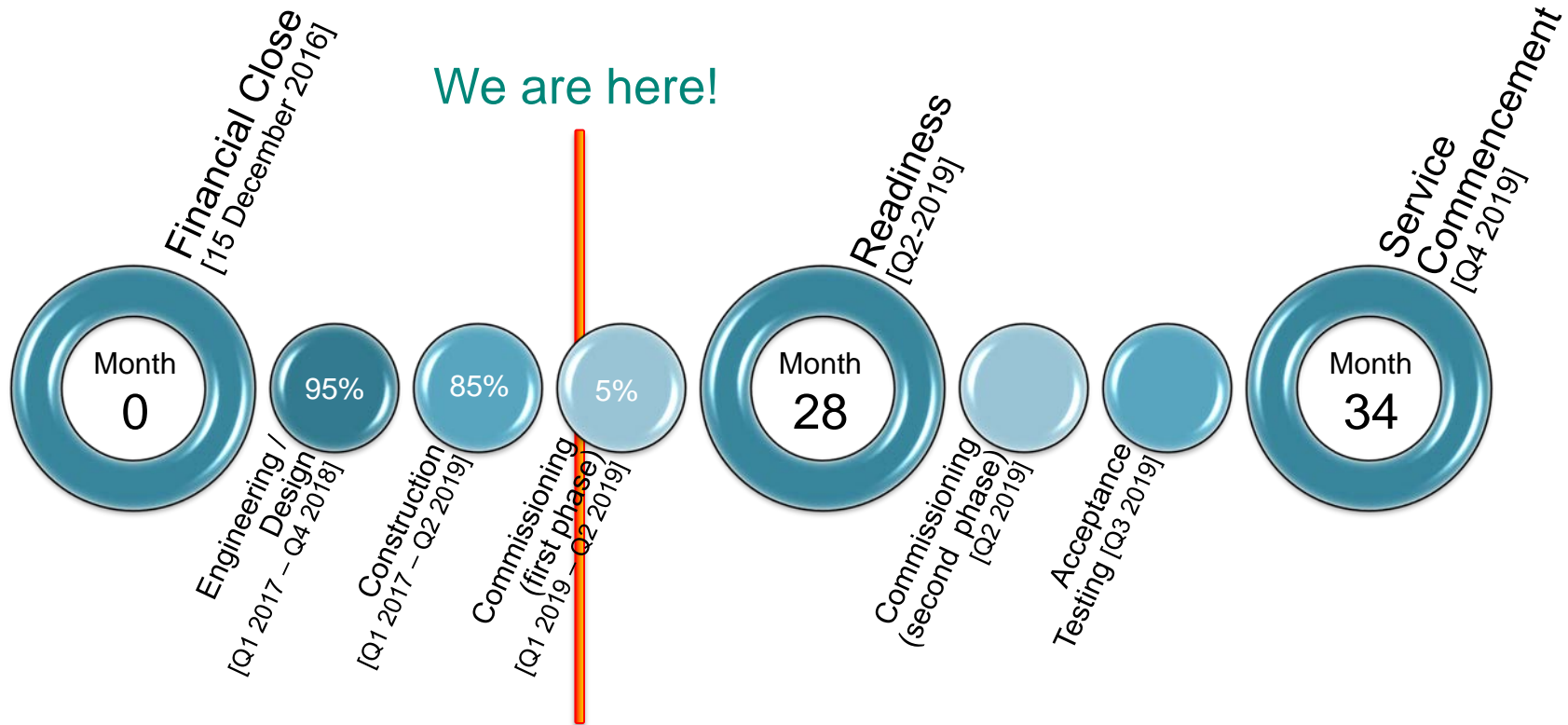
- **Target Economic Benefits**
 - ~300 construction jobs at peak
 - 30+ full-time jobs once operational
 - £50,000 Community Benefit Fund during construction; £28.6K Allocated
 - £230,000 Community Benefit Fund annually once operational
 - Millions of pounds of positive economic impact, utilising local businesses and suppliers during annual major and routine maintenance projects
 - £40 million supply chain value over contract term
 - Reduction in waste disposal costs & Welsh Government funding
 - Potential for local authority profit sharing

Project Progress Update

Parc Adfer Construction Update

Progress To Date

- On time and on budget
- Visitors' Centre design continues
- More than 400 workers on site



Parc Adfer Construction Update

November 2018

- Administration building air handling unit installed
- Incinerator bottom ash storage area, roof sheeting being installed
- Compressor room installation of pipework



Parc Adfer Construction Update

December 2018

- Control room installation
- Compressor room ducting
- Demineralised water treatment room tiled



Parc Adfer Construction Update

January 2019

- Air Cooled Condenser, frame assembly and erection
- Admin building glazing installation
- IBA conveyor to storage area



Parc Adfer Construction Update

Latest Drone Footage



Community Benefit Fund Update

Parc Adfer CLG

Community Benefit Fund – The Fund

- £50,000 Fund to cover 3-year construction period
- Maximum contribution of £2,000 per Project
- For Projects that are within, or benefit, the Deeside Partnership area

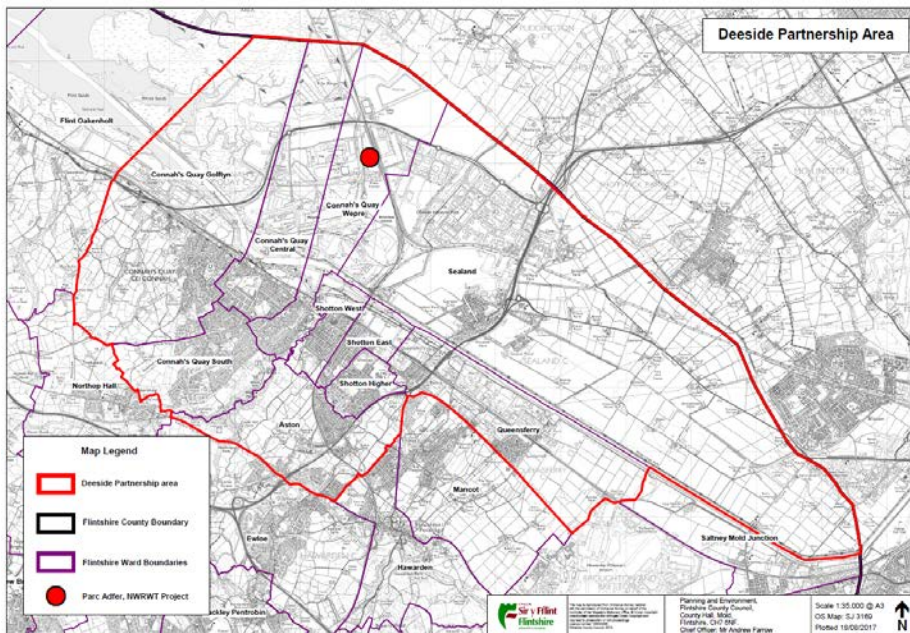
WHAT ARE THE CRITERIA?

Applications must demonstrate one or more of the following:

- Environmental benefits, for example the promotion of clean energy, waste reduction and / or recycling improvement
- Improved standards of health, safety and wellbeing
- Enhancement of the wider community, including skills and educational development, environmental improvements and activities that improve community cohesion

In addition applications will need to:

- Be for specific projects or initiatives and not general requests to support day-to-day running costs, pay salaries or contribute to reserve funding
- Not involve individual sponsorship or advertising
- Be for funds that would fall outside of the normal local authority / government funding responsibilities



Community Benefit Fund Update

Engagement Activity To Date



Fund Status

	£
APPROVED SPEND TO DATE	28,571.64
TOTAL REMAINING IN FUND	21,428.36

- 32 Applications received
- 19 Applications approved
- 13 Applications rejected as outside eligibility criteria, and 1 withdrawn

Examples of Approvals to date

- Redecoration of Public Facilities
- Purchase of Defibrillators
- Engagement, Support and Funding of Community Events
- Educational and Commemorative Events
- Improvement of Sporting Facilities

Community Benefit Fund Update

Contributions to Date

Project	Contribution Awarded	Enhancement of Wider Community	Improved Health and Wellbeing	Environmental Benefit
Connah's Quay Old People's association	£650	✓	✓	
Daffodils	£1,400		✓	
Eye 2 Eye	£2,000		✓	
St John Ambulance	£1,817	✓	✓	
DangerPoint Ltd	£1,980	✓	✓	
YSGOL CROES ATTI	£2,000	✓		
Connah's Quay Sea Cadets	£2,000	✓		
Deeside Community First Responders	£2,000		✓	
Plas Derw Trust Ltd	£1,800		✓	✓
Friends of Flintshire CAB Ltd trading as Libby's Cafe	£520		✓	
Shotton Town Council	£1,000		✓	
Connah's Quay Town Council	£250	✓		
Sandycroft Community Centre	£2,000	✓	✓	
Connah's Quay and Shotton Interservices Committee	£2,000	✓		
Deeside Community Hospital League of Friends	£2,000	✓		
Shotton Town Council	£2,000	✓	✓	
Hawarden Cricket Club	£2,000	✓	✓	
Sandycroft CP School	£1,155		✓	

Community Liaison Group

New Applicants – Community Benefit Fund



Our social responsibility begins with the communities in which our facilities operate and our customers and employees live and work

- The most recent round of applicants have been received for assessment and one approved for funding
- Sandycroft CP School was awarded £1,155 to support the purchase of a defibrillator
- Device will allow the school to enhance emergency assistance for 370 pupils, 50 staff and the wider community; Currently, the nearest public access to a defibrillator is one mile



Together Stronger
Senedd Y Plant
Croeso

